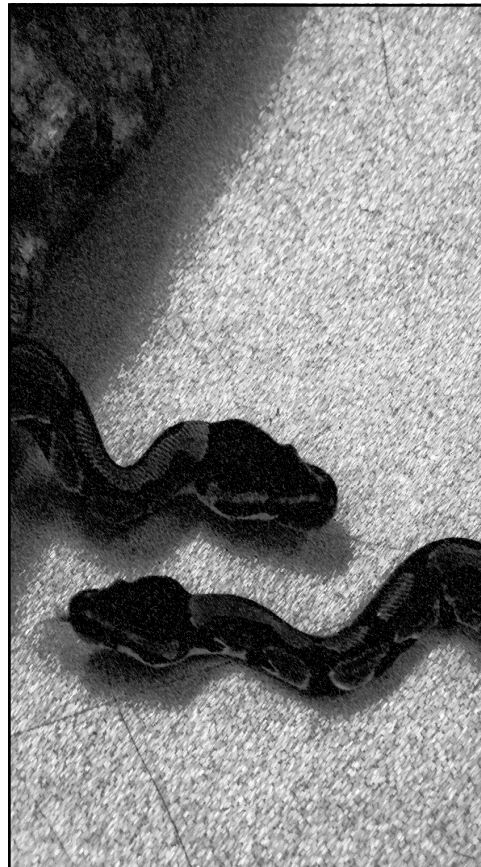
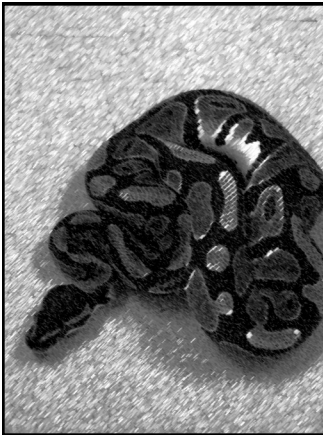


## CHECK LIST

- 1 Heat light/Heat pad
- 2 Water dish
- 3 Hiding Spots
- 4 Climbing Branches/decorations
- 5 Thermometer
- 6 Screen clips for lid
- 7 Feeding tongs (for frozen mice)
- 8 Good Book

**Buy 4 or more items on the checklist and receive 10% off regular price of those items**



**Tropical  
World Pets**

*Ball Python  
Care Sheet*



### Tropical World Pets

8444 Watson Road  
St. Louis, MO. 63119

Phone: (314) 849-4020

**Tropical World Pets**  
**Your Hometown  
Pet Specialists**

Tel: (314) 849-4020

---

# Ball Python Care Sheet

---

## Adult Size/Life Span

Ball pythons are heavy-bodied snakes able to grow to about 5 feet long, although the average adult size is about 4 foot long. They are a very long-lived snake known to live over 40 years.

## Caging

Ball pythons are strong and thick snakes, so a tight fitting lid is necessary. Young snakes under a year old do best in smaller tanks such as a 10 gallon. They feel more secure and can find food easier in smaller tanks. Once they are about a year old they can be moved into their adult cage which should be a 30-40 gallon tank or larger. Make sure you use screen clips to keep the lid on tight.

## Heating

Ball pythons need heat to be able to warm themselves to digest their food. A hot spot of 85-90 degrees on one side of the cage should be provided. A heat light or heat pad can be used for the purpose.

## Water

Ball pythons should have a water bowl large enough for them to soak their whole body in. Keep the water clean, as they will defecate in their water dish at times. Mist the cage when you see the snake is in shed.

## Food

Baby ball pythons should be fed hopper to small adult mice. As they grow larger, the size of the prey should be increased. Adults can be fed several mice or switched to rats. Most snakes will learn to take thawed frozen rodents off of tweezers. When feeding live prey, never leave it unattended as the mouse or rat may attack the snake. Feed every 7-10 days.

## Cage Setup

Ball pythons are shy snakes that do best when provided with hid-

ing areas preferably one on the heated side and one on the cool side. While not a tree dwelling snake, ball pythons will climb so sturdy branches should be provided. Plants, cork and other decorations can be used to give the cage a natural look.

## Handling

Ball pythons are generally very docile snakes that can be handled rather easily. There are a few times when they should not be handled. Wait to handle the snake at least 2 days after feeding since the snake is basically a long stomach and handling can cause regurgitation. Also be careful when handling if the snake is in shed as they cannot see well and might strike. You can tell when they are in shed because the skin looks dull and the eyes look blue. Always wash your hands after handling the snake or rodents.

*Get a good book because there is a lot more to learn about ball pythons.*

---

*Tropical World Pets*

8444 Watson Road  
St. Louis, MO 63119

